



# Biodiversity and Climate

Synergy and barriers in forest management – an NGO perspective

Bo Øksnebjerg  
WWF Denmark



# More than the T-shirts







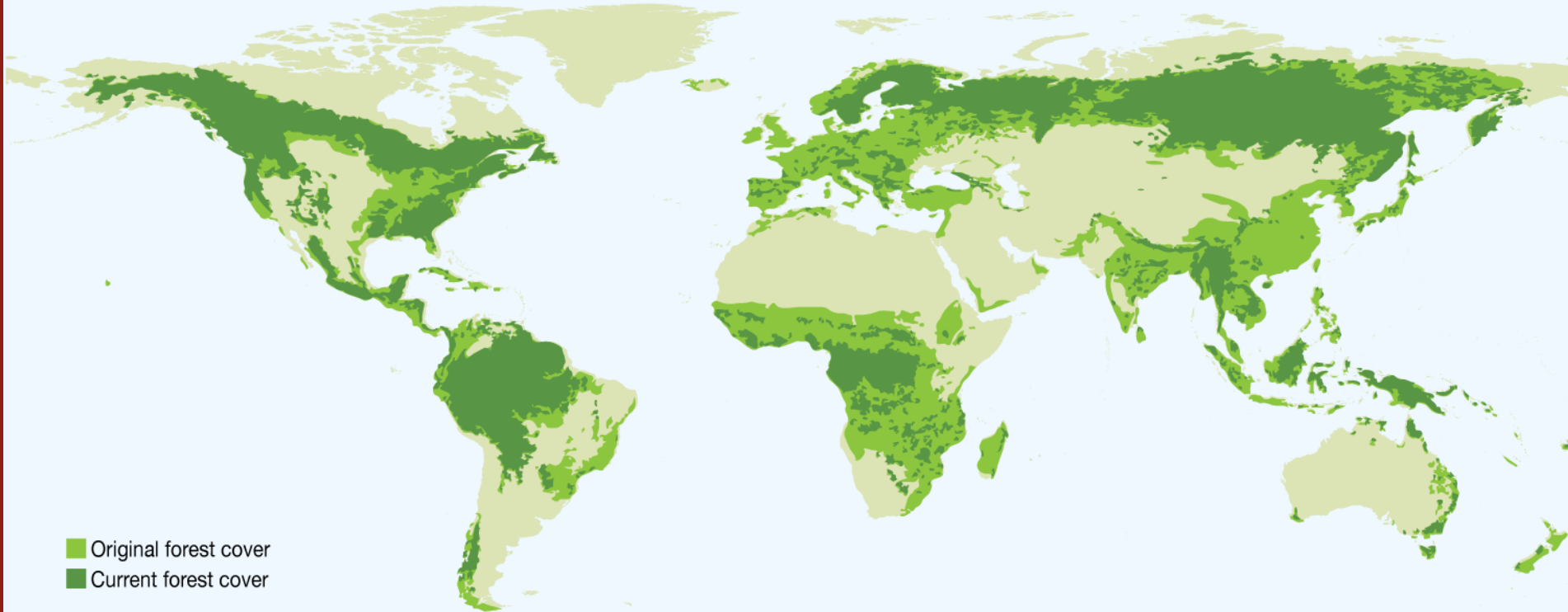
# The world is getting greener

Trend in Annual Average Leaf Area (% per decade, 2000-2017)





**But we've also lost 1,3 mio. km<sup>2</sup> of forests since 1990**



Source: WCMC online database, accessed August 2014





Climate change accelerates impact

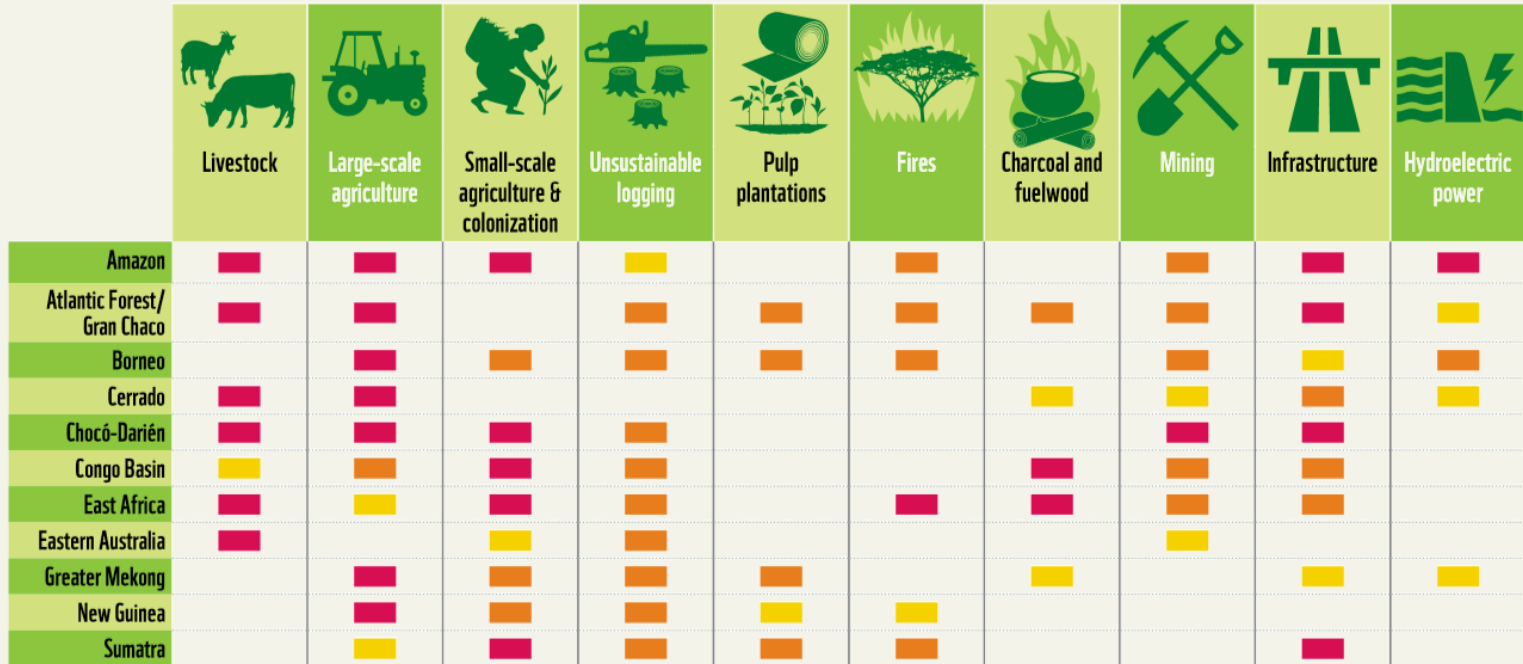


We must have ambitious  
area- and emissions targets





# Humans are taking their toll





nature > news > article

Subscribe



Search



Login

MENU ▾

nature

NEWS • 06 MAY 2019 • UPDATE 06 MAY 2019

# Humans are driving one million species to extinction

Landmark United Nations-backed report finds that agriculture is one of the biggest threats to Earth's ecosystems.

Jeff Tollefson



PDF version

RELATED ARTICLES

The battle for the soul of biodiversity

Top UN panel paints bleak picture of world's ecosystems







**Stop the loss of  
species and the  
diversity of life**



**Protect and restore  
our planet's  
natural spaces**



**Make  
production and  
consumption  
sustainable**





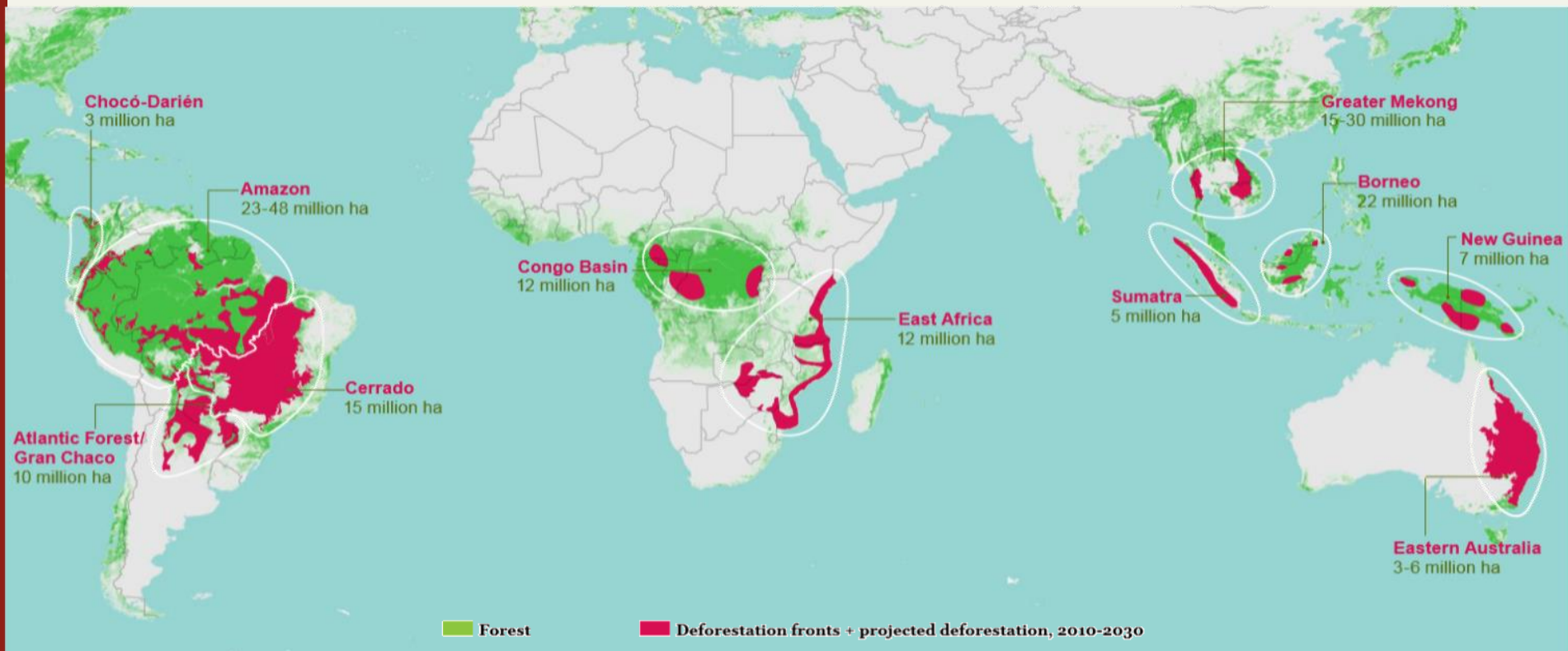
# A New Deal for Nature and People







# Fighting at the front lines







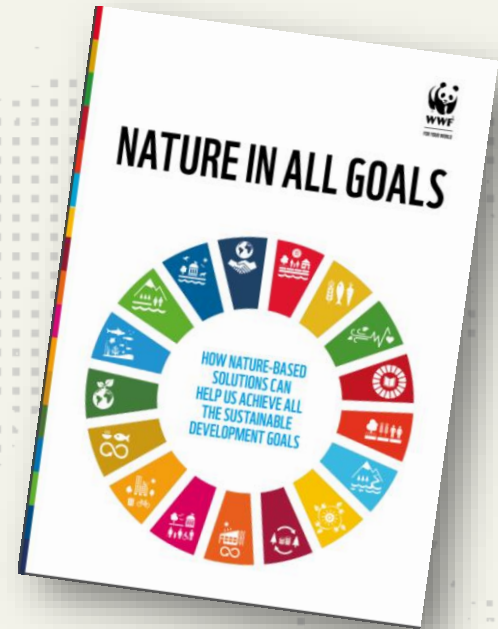
# Aiming for Zero Net Deforestation and Degradation

- Landscape approach to management, restoration and protection
- Strengthened protected area networks
- Deforestation free supply chains
- Reducing emissions from deforestation and forest degradation (REDD+)
- Valuation of ecosystem services
- Combatting unnecessary deforestation practices (e.g. FSC certification, agroforestry etc.)
- Introducing forest safeguards for roads and other infrastructure





# Implementing nature-based solutions across the world





Logic rarely follows  
the money







# The Danish connection 2019



Financial investments



Soy for livestock feed



Palm Oil



# Biodiversity Rock Bottom





‘Adverse condition - Poor’







## FSC seems like a good place to start

- Particularly valuable nature (§25) not protected by law
- Hollow trees (bats and woodpeckers) not protected all year
- Nesting trees not protected all year – and everything around it can be deforested
- Forestation permits not required – and no control





## WWF's 35-point plan: Biodiversity first

1. From production to 'Untouched' forest
2. Stricter area management
3. Restoration work and veteranization
4. End-date for biomass for fuel
5. Prepare for climate-induced change
6. Etc.





# At least 75.000 hectares

- ... Or more, if not chosen right
- State-owned seems most simple
- Easier for private owned forests







# Preparing for high-end biomass





Bo Øksnebjerg  
[b.oeksnebjerg@wwf.dk](mailto:b.oeksnebjerg@wwf.dk)



WWF

