

THE **I**NTERGOVERNMENTAL **P**LATFORM ON **B**IODIVERSITY & **E**COSYSTEM **S**ERVICES



**Symposium on Invasive Alien Species
Aarhus University, 12 December 2023**

Lars Dinesen, Coordinator, IPBES-office

www.ipbes.dk



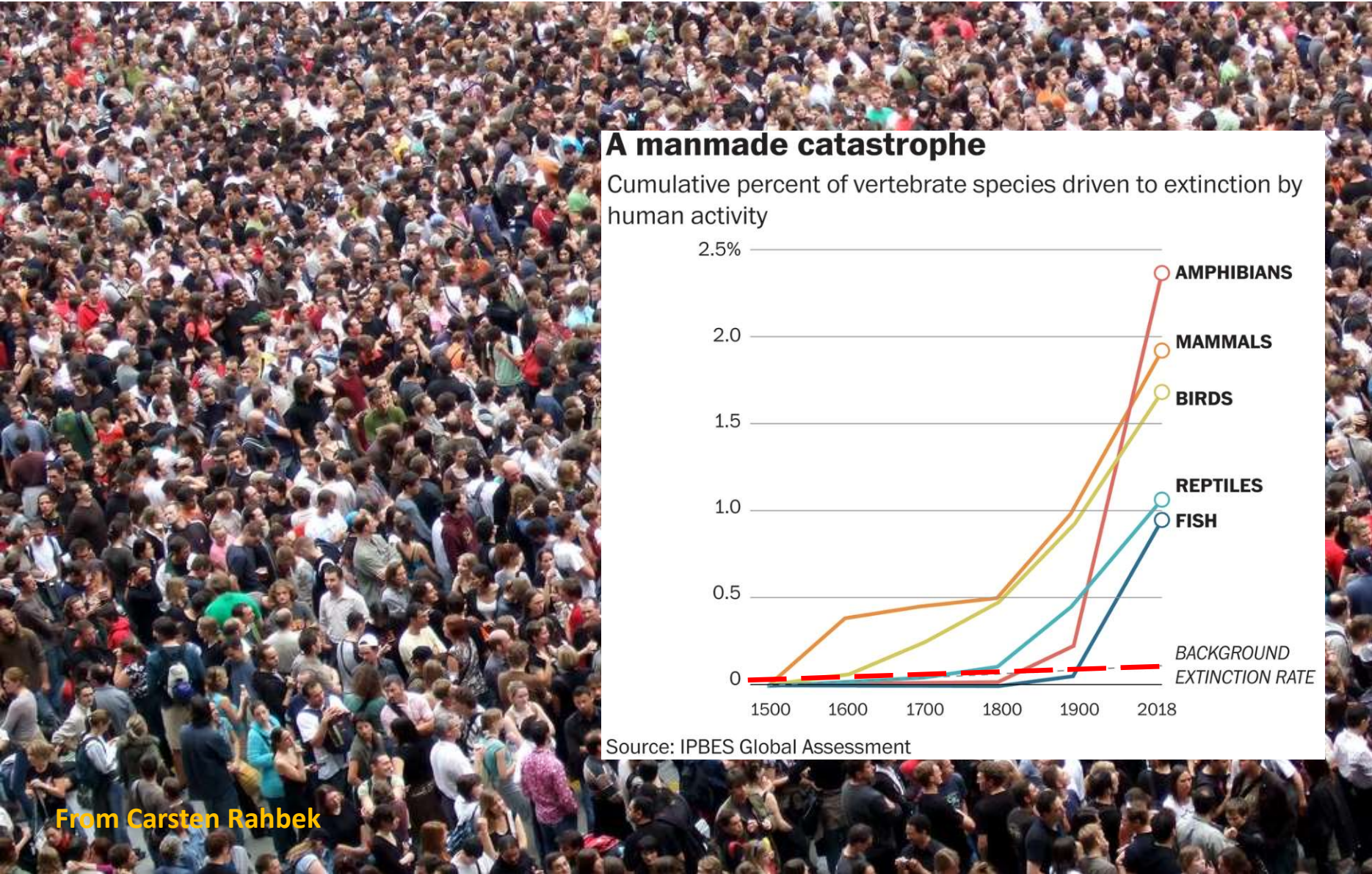
“The mission of IPBES is to strengthen the science-policy interface for biodiversity and ecosystem services for the conservation and sustainable use of biodiversity, long-term human well-being and sustainable development”

www.ipbes.net



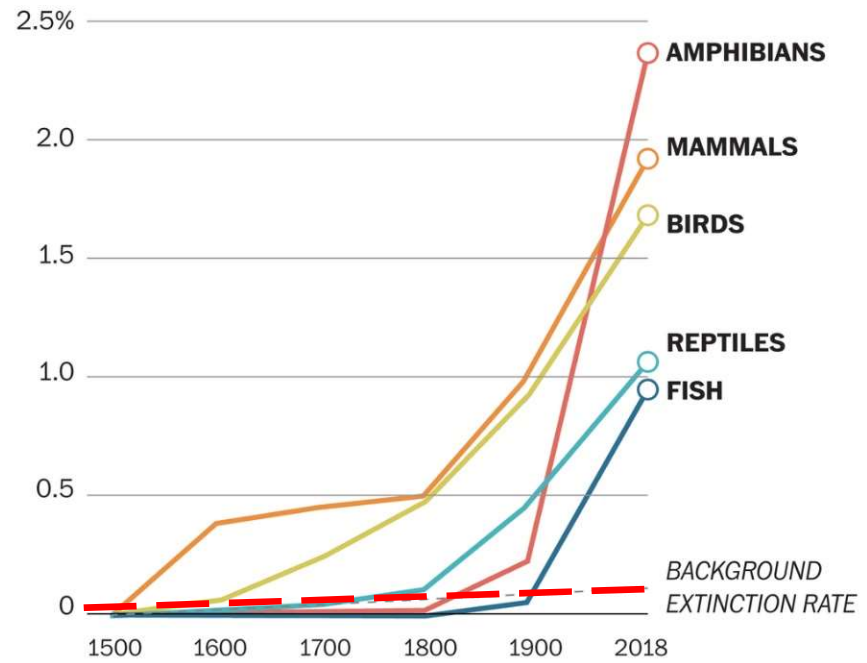
IPBES consensus reports

- IPBES deliver scientific consensus reports upon request from the member states
- IPBES prepare consensus reports across disciplinary boundaries
- IPBES designate 'option for actions'.
- All consensus reports are adopted unanimously by the member states.



A manmade catastrophe

Cumulative percent of vertebrate species driven to extinction by human activity



Source: IPBES Global Assessment

From Carsten Rahbek

Summary for policymakers of the global assessment report on biodiversity and ecosystem services



Land/sea use changes



Direct exploitation



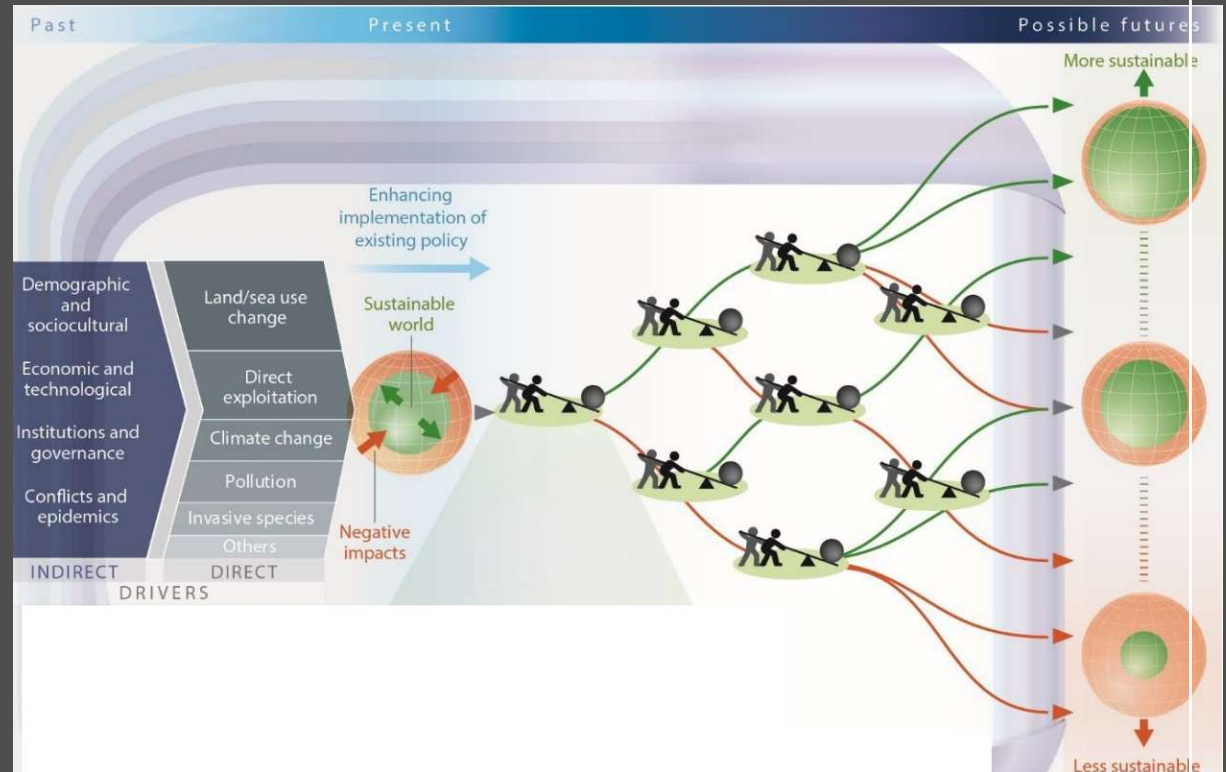
Climate change



Pollution



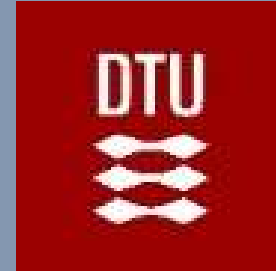
Invasive species



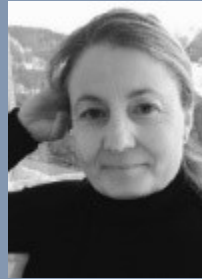
IPBES global



The Danish IPBES collaboration



Steering Committee



Strategic development



Expert Committee

IPBES ambassadors at the institutions



A national IPBES office with three main aims:

Communication / Uptake

Involvement



Raise funds for research

National Uptake



15. Juni Fonden

Symposia 2020 -

1. Restoration

2. Climate change

3. Economy

4. Land sparing v. land sharing

5. Values

6. Invasive Alien Species

Værdien af biodiversitet

16. juni 2023 | Københavns Universitet

Symposium om værdierne af biodiversitet afholdt på Københavns Universitet på en bevilling fra 15. Juni Fonden.



Land sharing & land sparing

30. november 2022 | Moesgaard Museum

Symposium om biodiversitet i det danske produktionslandskab afholdt på Moesgaard Museum under værtskab af Aarhus Universitet på en bevilling fra 15. Juni Fonden.



Biodiversitet og økonomi



GENOPRETNING AF MARIN BIODIVERSITET OG BÆREDYGTIG ANVENDELSE AF HAVETS RESURSER

EKSPERTUDTALELSE



GENOPRETNING AF MARIN BIODIVERSITET OG BÆREDYGTIG ANVENDELSE AF HAVETS RESURSER
Ekspertudtalelse

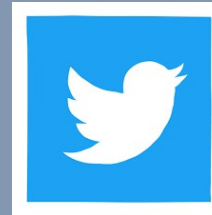


GENOPRETNING AF BIODIVERSITET OG ØKOSYSTEMER

EKSPERTUDTALELSE



www.lpb.es.dk



LinkedIn



Contact:

Lars Dinesen

Lars.Dinesen@sund.ku.dk

Tel: 9350 9570